



RECP #: 752665

RECORDED 5/8/2019 AT 1:11 PM BK# 2620 PG# 1707  
Debra K. Lee, CLERK OF LARAMIE COUNTY, WY PAGE 1 OF 1

# STATE OF WYOMING CORNER RECORD

(In compliance with the CORNER PERPETUATION AND FILING ACT, Wyoming Statutes, 1997 Section 33-29-140, et. seq., and the Rules and Regulations of the Board of Registrations for Professional Engineers and Professional Land Surveyors)

## EAST QUARTER CORNER SECTION 13, T. 18 N., R. 62 W., 6TH P.M., LARAMIE COUNTY, WYOMING

**GLO:** SET A SANDSTONE 16X10X4 11 IN. DEEP. MARKED 1/4 ON W. FACE FOR 1/4 SEC. COR.

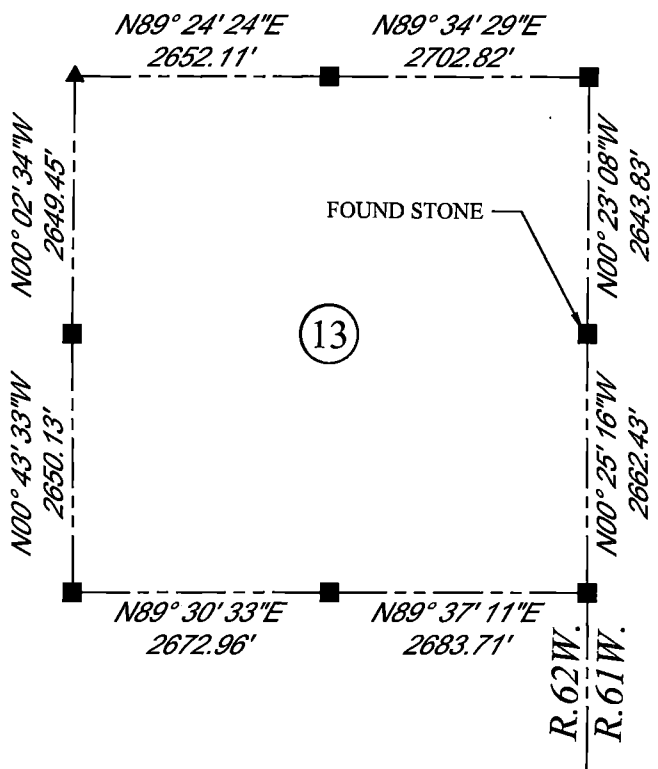
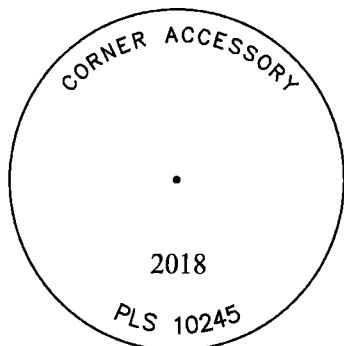
**FOUND:** FIRM SET SANDSTONE, APPROX. 13X9X3. STONE WAS BROKEN HALF WAY IN THE GROUND. NO MARKINGS FOUND. STONE IS APPROX. 2' ON E. SIDE OF N & S FENCE LINE.

**SET:** ALUMINUM CAP AS SHOWN ON S. SIDE OF STONE. CAP IS APPROXIMATELY 2" ABOVE GROUND.



SCALE: NONE  
NORTH DETERMINED BY  
G.P.S OBSERVATIONS

SET ALUMINUM CAP, STAMPED AS SHOWN



### LEGEND:

- FOUND BLM CAP
- FOUND USFS CAP
- FOUND STONE
- FOUND PRIVATE MONUMENT
- ◆ CALCULATED POSITION
- ▲ SET MONUMENT (LS10245)
- SECTION LINE

DATE OF FIELD WORK: 10/05/2018 OFFICE REFERENCE: MERIDEN

### CROSS INDEX DIAGRAM

	1	2	3	4	5	6	7	8	9	10	11	12	13	14	15	16	17	18	19	20	21	22	23	24	25	
A																										A
B																										B
C		6																								C
D			5																							D
E				4																						E
F					3																					F
G						2																				G
H							1																			H
I																										I
J																										J
K																										K
L																										L
M																										M
N																										N
O																										O
P																										P
Q																										Q
R																										R
S																										S
T																										T
U																										U
V																										V
W																										W
X																										X
Y																										Y
Z																										Z
	1	2	3	4	5	6	7	8	9	10	11	12	13	14	15	16	17	18	19	20	21	22	23	24	25	

WOOD  
2615 AVIATION DRIVE  
SHERIDAN, WY 82801  
PH: 307-675-6400



THIS CORNER RECORD WAS  
PREPARED BY ME OR UNDER  
MY DIRECTION AND  
SUPERVISION,  
SEAL AND SIGNATURE

